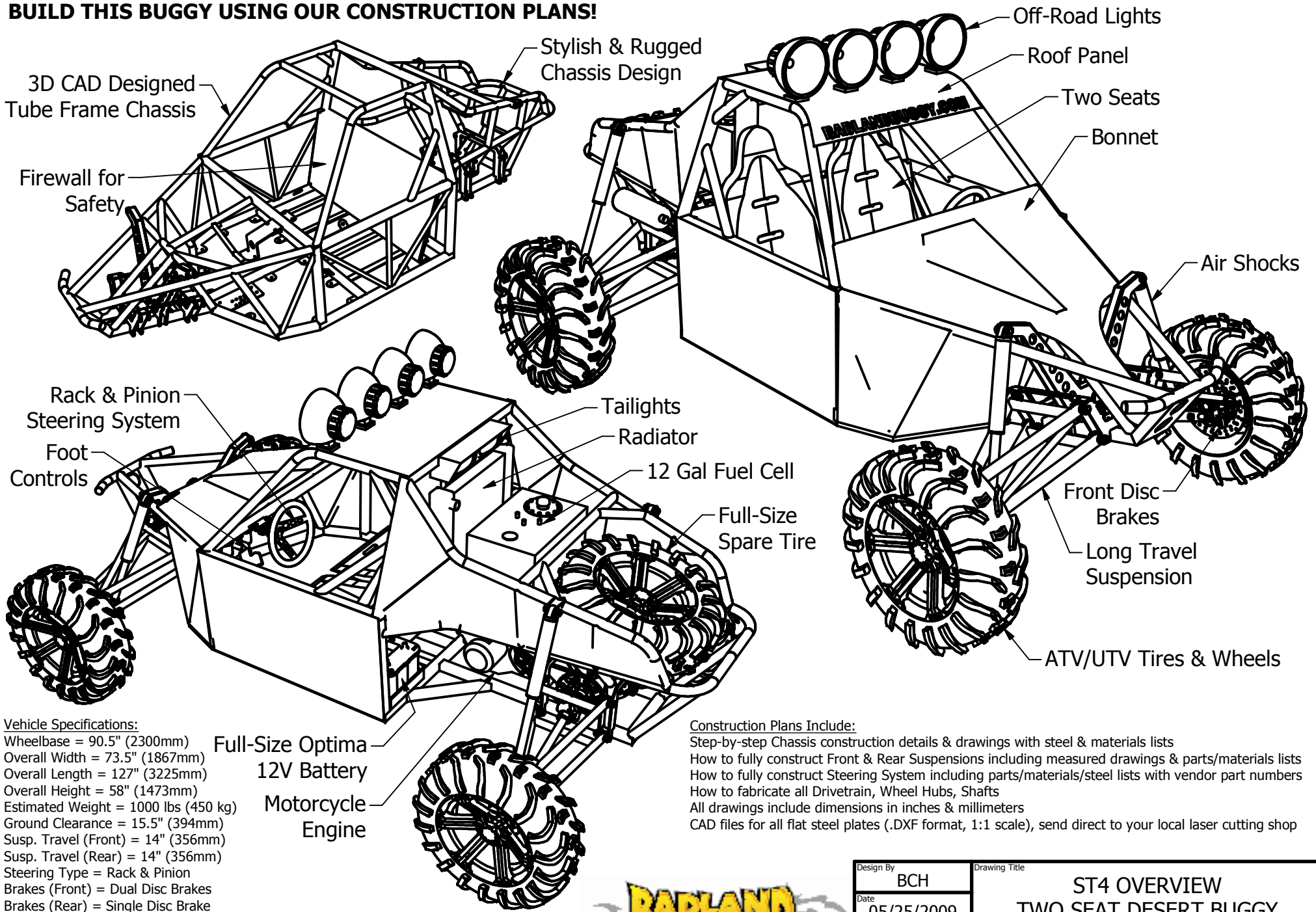


BUILD THIS BUGGY USING OUR CONSTRUCTION PLANS!



Vehicle Specifications:

- Wheelbase = 90.5" (2300mm)
- Overall Width = 73.5" (1867mm)
- Overall Length = 127" (3225mm)
- Overall Height = 58" (1473mm)
- Estimated Weight = 1000 lbs (450 kg)
- Ground Clearance = 15.5" (394mm)
- Susp. Travel (Front) = 14" (356mm)
- Susp. Travel (Rear) = 14" (356mm)
- Steering Type = Rack & Pinion
- Brakes (Front) = Dual Disc Brakes
- Brakes (Rear) = Single Disc Brake
- Engine Type = 600cc+ Motorcycle Engine
- Drivetrain = Chain / U-Joint Driveshafts (no differential)
- Tires = AT26x7-15 (full size spare)
- Wheels = 15x7, 5+2 offset, 4 on 100mm

Construction Plans Include:

- Step-by-step Chassis construction details & drawings with steel & materials lists
- How to fully construct Front & Rear Suspensions including measured drawings & parts/materials lists
- How to fully construct Steering System including parts/materials/steel lists with vendor part numbers
- How to fabricate all Drivetrain, Wheel Hubs, Shafts
- All drawings include dimensions in inches & millimeters
- CAD files for all flat steel plates (.DXF format, 1:1 scale), send direct to your local laser cutting shop



Design By	BCH	Drawing Title	ST4 OVERVIEW TWO SEAT DESERT BUGGY VEHICLE SPECIFICATIONS	
Date	05/25/2009	Scale	NTS	
Sheet	1 of 1	Drawing Number	ST4-PV01	Revision No. 01